



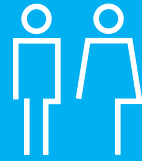
Forza Lockers



Manufactured from hardwearing 12mm solid grade laminate (SGL) doors and aluminium carcasses, Forza offers an ideal mix of practicality and economy, with no compromise on aesthetics.

Forza lockers provide a lasting, durable, secure storage facility.

- ✓ Locker doors and shelving manufactured from 12mm solid grade laminate (SGL)
- ✓ Satin anodised aluminium bodies and sprung hinges
- ✓ Choice of six different locks including card, coin return and digital code locks
- ✓ Manufactured in sizes to suit your exact requirements



Specifications

Forza Lockers

Carcass

1.2mm folded aluminium sides with solid grade laminate (SGL) rear support (to aid width adjustments)

Doors

12/13mm solid grade laminate (SGL) with inset number disc

Shelves

12/13mm white solid grade laminate (SGL)

Framework

Satin anodised aluminium section

Hinges

Satin anodised aluminium sprung hinges

Lock options

Five options available.

Coin return locks: Perfect for public sports this lock is adjustable to facilitate various coinage including Euros and tokens.

Card locks: Ideal for member only facilities this provides a cash free alternative. Credit card style membership cards can be adapted to operate these locks.

Digital code locks: No keys to manage, operated by 4 digit code of users choice (with override).

Cam locks: For use with personalised/allocated locker installations such as staff rooms and schools.

Locker hasp: For use where the user provides their own padlock.

ojmar smart locks: Keyless Bluetooth operated locks - a hygienic and secure solution.

Dimensions

Height: 1800mm

Width: 300mm

Depth: 500mm

The above dimensions reflect typical standardised locker sizes. However, **Forza lockers are available manufactured to suit your specific requirements.**

0800 999 8888
info@washroom.co.uk
www.washroom.co.uk

Washroom Washroom Ltd.
Units 1-10 Hill Farm, Epping Lane
Abridge, Essex, RM4 1TU

Registered in England No. 4179055. VAT Reg No. 769 8061 79.



washroom
WASHROOM