

NEWSLETTER WASHROOM

1st January 2026


washroom
WASHROOM
www.washroom.co.uk

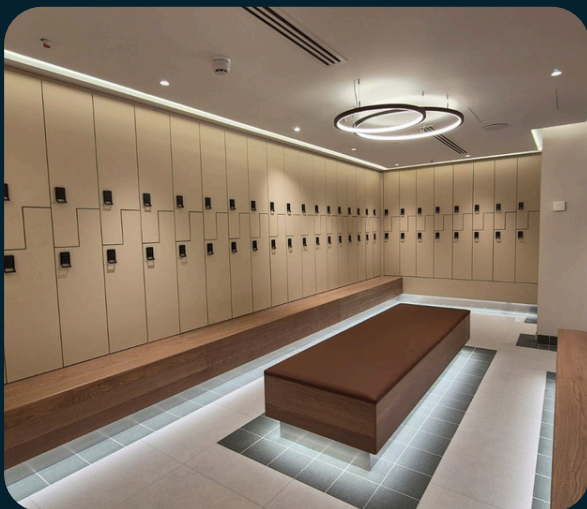
PROJECT WIN

We're excited to kick off the new year with a new project win at 25 George Street. We'll be carrying out WC fit out works across all levels, working alongside main contractor Knight Harwood and architect John Robertson Architects. A great way to start the year, and we're looking forward to bringing this project to life.



END OF TRIP SEASON

January is the perfect time to focus on End of Trip facilities, providing showers, changing areas, lockers, and secure storage for active commuters. Upgrading these spaces at the start of the year supports wellness and sustainability goals while encouraging healthier travel, making workplaces more modern and employee-friendly.



MATERIAL HIGHLIGHT

Introducing Elenite, a sustainable, low carbon solid surface material from Low Carbon Industrial and Meganite. Made from natural waste like walnut shells and bamboo fibers, it is durable, formaldehyde free and silica free, and reduces embodied CO₂ by 29 percent, making it an eco conscious choice for interiors.

FACTORY HIGHLIGHT

We've recently added the Kündig Botop sander to our production line, investing in modern, future-ready machinery. The upgrade lets us work smarter, completing more in fewer passes while using less power than older equipment.